

**SKYJACK**<sup>™</sup>



**ZB12032** | 10,000 lb. Capacity, 32 ft. Lifting Height



**ZOOM BOOM SERIES**

**Telescopic** MATERIAL HANDLER

# ZOOM BOOM SERIES ZB12032

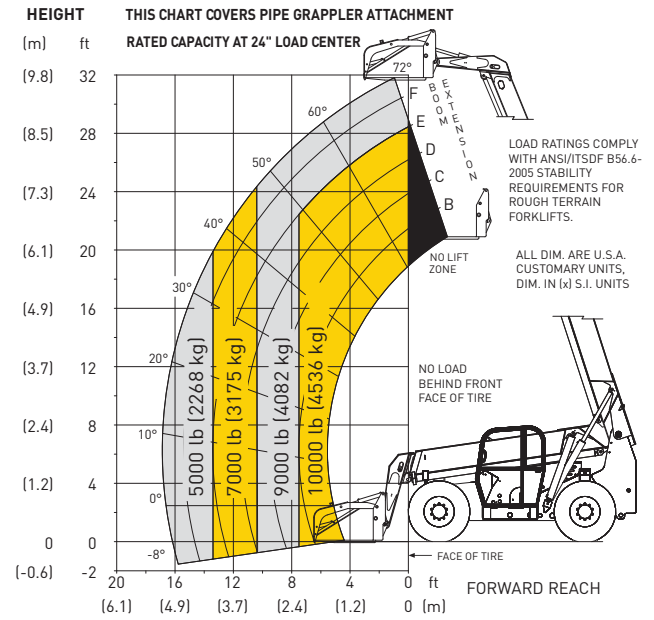
## DIMENSIONS

Wheelbase.....	10'	3.05 m
Overall Width.....	8'6"	2.59 m
Overall Height (stowed) .....	8'4"	2.54 m
Overall length with grappler....	22'5"	6.83 m
Ground Clearance .....	16"	41 cm
Operating Weight .....	27,820 lb	12,619 kg
Turning Radius (outside).....	13'92"	4.01 m
Frame Leveling (degrees).....	+/- 8	

## SPECIFICATIONS

Engine .....	Cummins Tier 3 QSB 4.5C Turbocharged Diesel
HP @ rpm .....	110 HP @ 2500 rpm
Transmission.....	Dana powershift, 3 speeds forward and reverse
Top Speed.....	20.3 mph (33 km/h)
Axles.....	Dana steerable outboard planetary
Brakes.....	Service - 4 wheel wet disc Parking - SAHR on rear axle
Tires .....	15.5 x 25 16PR grip lug
Steering.....	3 mode (2 wheel, 4 wheel, crab)
Boom.....	Maximum lift height - 32' (9.75 m) Maximum forward reach 16'10" (5.13 m) Attachment rollback - 5 degrees (boom lowered) Attachment forward tilt - 21 degrees (boom elevated)
Grappler .....	10,000 lbs (4,536 kg) capacity c/w 2" x 6" x 48" (5.1 cm x 15.2 cm x 122 cm)
General.....	Fuel/hydraulic oil tank - 41 US gal. (155L) Hydraulic tank - 41 US gal. (155L) 12 volt - 100 amp. alternator

## CAPACITY CHART



**MAXIMUM CAPACITY IS 10,000 LB AT 24" LOAD CENTER**

## STANDARD EQUIPMENT

- Rear Axle "Stable-Lock" Cylinder with backup accumulator
- Grappler attachment
- Single function auxiliary hydraulics
- Dual lift cylinders
- See through high pivot boom mount design
- ROPS/FOPS certified cab
- Rear window and side screen
- Under cab storage compartment / step
- Rubber isolated bottom mount cab design
- Adjustable Suspension Seat with seat belt
- Dual joystick pilot operated controls for boom and frame level functions
- Tilt adjustable joystick console
- Gauge instrumentation
- Electronic Powerview engine monitor/gauge
- Lockable steel swing up engine doors
- Engine Grid Heater
- Dual element air cleaner with flow restriction indicator
- Independent Front/Rear Brake Systems
- Dual brake accumulators for Dead Engine Braking
- Brake Activated Transmission Disconnect
- 41 gallon steel hydraulic tank
- 41 gallon steel fuel tank
- Horn and backup alarm
- Mirrors, right and left side
- Easy to remove steel component and access covers
- Operator/Maintenance and Parts manuals
- 12 months/2000 hour warranty (4 years on structure)

## OPTIONAL EQUIPMENT

- Turn signals/lights
- Working lights
- Flashing beacon
- Enclosed operator cab
- Dual batteries
- Foam filled tires
- Fenders
- Air conditioning

**Note:** Materials and specifications are subject to change without notice.



55 Campbell Rd. Guelph, ON Canada N1H 1B9  
 Sales Inquiries: 1-877-755-4387 [1-877-SJLIFTS]  
 Main Switchboard: 1-800-265-2738  
 Phone: 519-837-0888  
 Fax: 519-837-8104  
 Email: skyjack@skyjack.com

### IMPORTANT

- Machine design complies with ANSI/ITSDF B56.6-2005 stability requirements for rough terrain forklifts.
- Rated capacities shown are with machine on firm level ground, steered straight with frame level and on properly inflated tires
- Read boom angle and boom extension, then determine allowable load from chart.
- Do not exceed rated loads as dangerous and unstable machine conditions will result.
- Always travel with boom retracted in the lowest possible position.
- Never position fork carriage behind front face of tire.

Printed In Canada Jan 2010