

**SKYJACK**<sup>™</sup>



**ZB32032** | 32,000 lb. Capacity, 32 ft. Lifting Height



**ZOOM BOOM SERIES**

**Telescopic** MATERIAL HANDLER

# ZOOM BOOM SERIES ZB32032

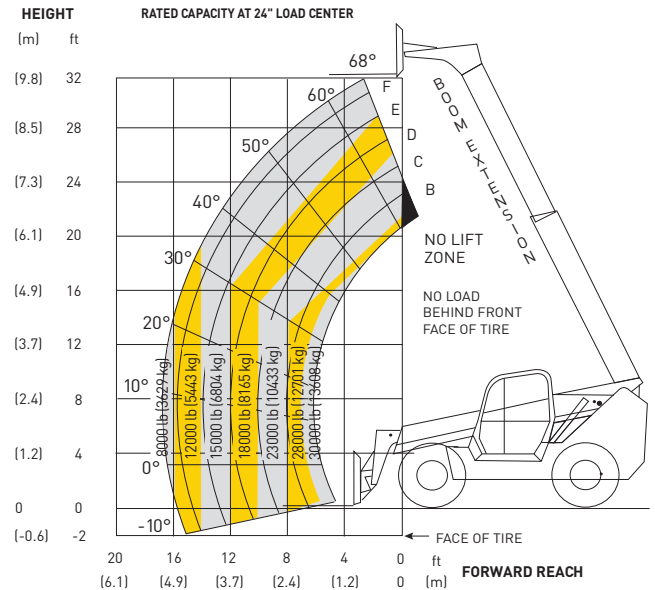
## DIMENSIONS

Wheelbase.....	12'	3.66 m
Overall Width.....	9'10"	3.00 m
Overall Height (stowed) .....	10'	3.05 m
Overall Length (less forks) .....	20'3"	6.17 m
Ground Clearance .....	18"	46 cm
Operating Weight .....	65,500 lb	29,710 kg
Turning Radius (outside).....	23'4"	7.11 m
Frame Leveling (degrees).....	+/- 5	

## SPECIFICATIONS

Engine .....	Cummins QSB 5.9 Turbocharged Diesel
HP @ rpm .....	173 horsepower @ 2500 rpm
Transmission.....	Dana powershift, 3 speeds forward and reverse
Top speed .....	20.5 mph (33 km/h)
Axles.....	Axletech steerable outboard planetary
Brakes.....	Service - 4 wheel dry disc Parking - pinion mounted dry disc on both axles
Tires .....	16 x 25 24PR grip lug
Steering.....	3 mode (2 wheel, 4 wheel, crab)
Boom.....	Maximum lift height - 32' (9.75 m) Maximum forward reach - 16'3" (4.95 m) Dual shaft type carriage Carriage rollback - 5 degrees (boom lowered) Carriage forward tilt - 6 degrees (boom elevated)
General.....	Fuel/hydraulic oil tank - 60 US gal. (227L) Hydraulic tank - 60 US gal. (227L) 12 volt - 130 amp. alternator

## CAPACITY CHART



## STANDARD EQUIPMENT

- Standard quick attach carriage mount system
- Rear Axle "Stable-Lock" Cylinder with backup accumulator
- Standard quick attach carriage mount system
- Dual lift cylinders
- High pivot boom mount design
- ROPS/FOPS certified cab
- Rear window and side screen
- Lockable under cab storage compartment / step
- Rubber isolated bottom mount cab design
- Adjustable Suspension Seat with seat belt
- Dual joystick pilot operated controls for boom and frame level functions
- Tilt adjustable joystick console
- Gauge instrumentation
- Electronic Powerview engine monitor/gauge
- Lockable steel swing up engine doors
- Engine Grid Heater
- Two Stage Air Cleaner
- Dual batteries
- Independent Front/Rear Brake Systems
- Dual brake accumulators for Dead Engine Braking
- Brake Activated Transmission Disconnect
- 60 gallon steel hydraulic tank
- 60 gallon steel fuel tank
- Horn and backup alarm
- Mirrors, right and left side
- Remote grease fittings for axle trunnion mount lubrication
- Easy to remove steel component and access covers
- Operator/Maintenance and Parts manuals
- 12 months/2000 hour warranty (4 years on structure)

## OPTIONAL EQUIPMENT

- Turn signals/lights
- Working lights
- Flashing beacon
- Auxiliary hydraulics
- Enclosed operator cab
- Fenders
- Air conditioning
- Mine code specification

## ATTACHMENTS

- Various carriage/fork sizes
- Fork positioner
- Sideshift carriage
- Material bucket
- Other specialized attachments

**Note:** Materials and specifications are subject to change without notice.



55 Campbell Rd. Guelph, ON Canada N1H 1B9  
Sales Inquiries: 1-877-755-4387 [1-877-SJLIFTS]  
Main Switchboard: 1-800-265-2738  
Phone: 519-837-0888  
Fax: 519-837-8104  
Email: skyjack@skyjack.com

### IMPORTANT

- Machine design complies with ANSI/ITSDF B56.6-2005 stability requirements for rough terrain forklifts.
- Rated capacities shown are with machine on firm level ground, steered straight with frame level and on properly inflated tires
- Read boom angle and boom extension, then determine allowable load from chart.
- Do not exceed rated loads as dangerous and unstable machine conditions will result.
- Always travel with boom retracted in the lowest possible position.
- Never position fork carriage behind front face of tire.