

SJ85 AJ

ARTICULATING BOOM



STANDARD FEATURES

- EASYDRIVE™ Direction sensing drive and steer controls
- SPEEDYREACH™ Versatility
- SKYRISER™ True vertical rise
- SKYCODED™ Color coded and numbered wiring system
- Axle based 4WD system
- Operator controlled locking rear differential and limited slip front differential
- Oscillating axle
- 45% Gradeability
- Drivable at full height
- Stage V Deutz TCD2.2L diesel engine
- Wet disc SAHR brakes (front and rear axle)
- Relay based control system
- Proportional controls
- Secondary Guarding (SGE)
- Overload sensing system
- Tilt alarm with drive cut-out
- Dual capacity rating
- 0.91 x 1.83 m Platform
- Modular platform railing system
- Lanyard attachment points
- Tri-entry sliding mid-rail
- Wiring for AC outlet to platform
- Swing out engine tray
- Swing up cowlings
- Operator horn
- Hourmeter
- 360° Continuous turret rotation
- Tie down/lifting lugs
- 18 x 625 Grip lug foam-filled tires

ACCESSORIES AND OPTIONS

- Pipe rack
- Tool caddy
- Deutz D2011L04i Diesel engine (export only)
- Platform work lights
- Flashing light
- All motion alarm
- 0.91 x 2.44 m Platform
- Rear gate
- Auxiliary top rail (0.91 x 2.44 m platform only)
- 3.5 kW Generator (Includes hydraulic oil cooler)
- Hydraulic oil cooler
- Bio oil
- 1/2" Airline to platform
- Hostile environment package (Includes cylinder bellows, boom wipers, covers for the fly boom cutouts, and control box cover)
- Control box cover
- Grip lug foam-filled non-marking tyres
- ELEVATE telematics

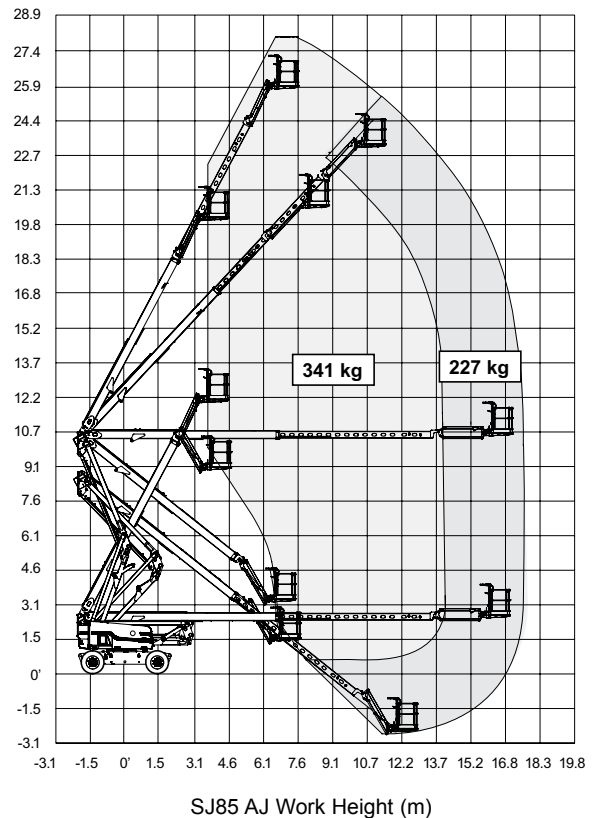
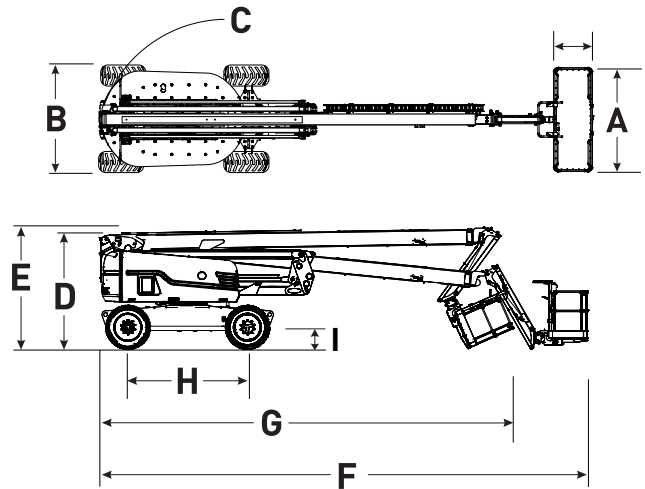
† Capacities, and machine weights may differ when options are added.

‡ Certain option pricing not available at time of printing.

Preliminary specifications at time of printing. Standard lead times may be increased when optional equipment is added, consult factory.

SJ85 AJ ARTICULATING BOOM

Dimensions	SJ85 AJ
Work Height	27.91 m
Platform Height	25.91 m
Horizontal Reach	17.07 m
Working Reach	17.72 m
Up and Over Height	10.36 m
A Platform Size	0.91 x 1.83 m
B Stowed Width	2.49 m
C Tailswing	0.86 m
D Stowed Height	2.67 m
E Transportation Height	2.67 m
F Stowed Length	11.63 m
G Transportation Length	10.03 m
H Wheelbase	2.84 m
I Ground Clearance	0.34 m
Specifications	SJ85 AJ
Rotation	360°
Platform Rotation	170°
Jib Length	1.68 m
Jib Range +/-	+65°/-60°
Weight	16,965 kg
Gradeability	45%
Turning Radius (Inside)	3.05 m
Turning Radius (Outside)	6.22 m
Axle Oscillation	10.16 cm
Drive Speed (High speed)	4.8 km/h
Capacity	227 / 341 kg
Maximum # of Persons	2 / 3
Tyre Type	Grip lug foam-filled
Tyre Size	18-625
Diesel Engine	55 kW (74 HP)
Fuel Tank Capacity	115 L
Hydraulic Reservoir	170 L



Skyjack UK
 Unit 1, Maes-y-Clawdd
 Maesbury Road Industrial Estate
 Oswestry, Shropshire, SY10 8NN
 Tel: +44 (0) 1691 676235
 Fax: +44 (0) 1691 676239
 Email: info@skyjackeurope.co.uk

Skyjack France
 74 Rue Sibert
 F-42400 Saint-Chamond
 France
 Tel. +33 (0) 4 78 73 53 32
 Fax. +33 (0) 4 78 56 52 42

Skyjack Germany
 Därmannsbusch 2a
 D-58456 Witten
 Germany
 Tel: +49 (0) 2302 20 26 909
 Fax: +49 (0) 2302 20 25 671

Skyjack AB Sweden
 Agnesbergsvägen 28
 424 38 Agnesberg
 Sweden
 Tel: +46 (0) 31 21 22 45
 Fax: +46 (0) 31 787 65 10

www.skyjack.com