

SJ1256 THS

TELEHANDLER



KEY FEATURES

- 12,000 lbs (5,443 kg) Maximum lift capacity
- 56' 3" (17.14 m) Maximum lift height
- 6,000 lbs (2,722 kg) Capacity @ maximum lift height (no outriggers)
- 7,000 lbs (3,175 kg) Capacity @ maximum lift height (on outriggers)
- 42' 4" (12.90 m) Maximum forward reach
- 1,000 lbs (454 kg) Capacity @ maximum forward reach (no outriggers)
- 3,500 lbs (1,588 kg) Capacity @ maximum forward reach (on outriggers)
- Tier 4 final 107hp/320 lb-ft Deutz TCD 3.6L engine
- 22,500 lbs Drawbar pull
- 3-Speed Dana powershift transmission & Dana axles
- Yoke-mounted lifting hook
- 48" Quick attach, floating pin carriage
- Pallet forks, 2.25" x 5" x 48", 12,000 lbs capacity

TIRE OPTIONS

- Airless solid rubber 14 x 24
- Non-marking airless solid rubber 14 x 24

STANDARD FEATURES

- Axle mount outriggers
- Auxiliary hydraulics
- Engine block heater
- Quick attach carriage mount
- Rear window with wiper
- Side window
- Suspension seat
- Single multifunction pilot operated joystick control
- In-cab engine multifunction display
- Hydraulic test ports
- Lockable in-cab storage box
- Rear towing hitch pin
- Steel engine cowling
- Steel component and access covers
- Telematics ready
- ELEVATE Live
- 2-Year Gold Leaf Warranty (5-year structural warranty)

FORK OPTIONS

- Pallet forks, 2.25" x 5" x 48", 60" or 72", 12,000 lbs capacity
- Fully tapered forks, 1.75" x 7" x 48", 12,000 lbs capacity
- Block forks, (set of 6) 2" x 1.5" x 46", 9,000 lbs capacity

† Standard lead times may be increased when optional equipment is added, consult factory.
‡ Foam-filled tires, standard carriage only. Optional equipment will increase weight.

SJ1256 THS TELEHANDLER

12,000 lbs (5,443 kg) capacity, 56' 3" (17.14 m) maximum lift height

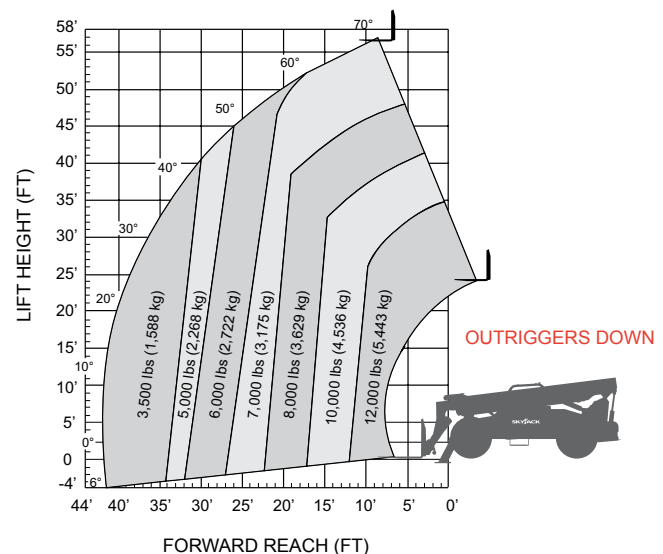
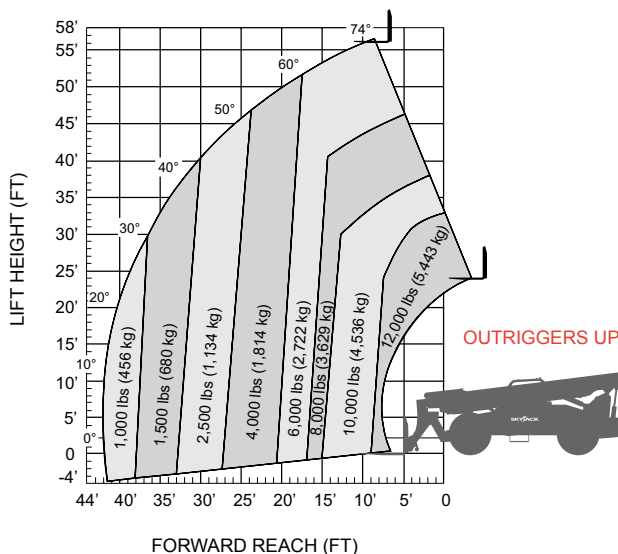
SPECIFICATIONS	SJ1256 THS
Maximum Lift Capacity	12,000 lbs (5,443 kg)
Maximum Lift Height	56' 3" (17.14 m)
Rated Lift Capacity @ Maximum Height	6,000 lbs (2,722 kg)
Rated Lift Capacity @ Max Height w. O/R	7,000 lbs (3,175 kg)
Maximum Forward Reach	42' 4" (12.90 m)
Rated Lift Capacity @ Maximum Reach	1,000 lbs (454 kg)
Rated Lift Capacity @ Max Reach w. O/R	3,500 lbs (1,588 kg)
Overall Length - Less Forks	23' 1" (7.03 m)
Overall Height - Stowed	8' 6" (2.59 m)
Overall Width	8' 5" (2.56 m)
Ground Clearance	19" (48.26 cm)
Turning Radius - Outside	173" (4.39 m)
Operating Weight	36,625 lbs (16,613 kg)
Engine	107hp / 320 lb-ft Deutz TCD 3.6L T4F
Max Travel Speed - Forward	15 mph (24 km/h)
Drawbar Pull	22,500 lbs
Transmission	Dana Powershift, 3 Speeds F/R
Axles	Dana
Steering	3 mode (Front Wheel, 4 Wheel, Crab)
Tires	Foam-Filled 14 x 24 16PR Grip Lug
Fuel Tank Capacity	35 gal. (132 L)
Hydraulic Reservoir	43.85 gal. (166 L)

OPTIONS

- Closed cab (adds front and top window, sliding side window, wipers, full door, heater/defroster, operator fan)
- Air conditioning (closed cab only)
- Premium joystick
- Back up sensor
- Backup sensor and camera
- Service convenience package (remote axle grease points & clean drain engine oil pan valve)
- Cold weather package (cold start engine oil, 50/50 antifreeze mix, battery blanket & hyd. tank heater)
- Arctic weather package (cold start engine oil, 50/50 antifreeze mix, battery blanket, hyd. tank heater & arctic hydraulic oil)
- Four wheel fenders
- Road light package (2 front headlights, front & rear turn signals, tail lights, brake lights)
- Work light package (2 front facing & 2 rear facing halogen work lights)
- Boom light package (2 boom mounted LED work lights)
- Rotating beacon
- Positive air shut-off valve
- Pintle hitch (in lieu of standard hitch pin)
- Non-destructive testing
- ELEVATE telematics
- Warranty Options (3-year or 5-year plans available)

QUICK ATTACH CARRIAGES/ATTACHMENTS

- 48", 60" or 72" Floating pin carriage, 12,000 lbs capacity
- 48", 60" or 72" Floating pin, side tilt carriage, 11,000 lbs capacity
- 72" Floating pin, swing carriage, 11,000 lbs capacity
- 53" Fork positioner, 12,000 lbs capacity
- 2' High capacity jib boom, 10,000 lbs capacity
- 12' or 15' Truss boom, 2,000 lbs capacity
- 1.75 Cubic yard bucket, 4,300 lbs capacity



Skyjack Head Office
 55 Campbell Rd. Guelph, ON Canada N1H 1B9
 Sales Inquiries: 1-877-755-4387 (1-877-SJLIFTS)
 Main Switchboard: 1-800-265-2738
 Phone: 519-837-0888
 Fax: 519-837-8104
 Email: skyjack@skyjack.com

IMPORTANT - Machine design complies with ANSI/ITSDF B56.6-2016 stability requirements for rough terrain forklifts. Rated capacities shown are with machine on firm level ground, steered straight with frame level and on properly inflated tires. Read boom front angle and boom extension, then determine allowable load from chart. Do not exceed rated loads as dangerous and unstable machine conditions will result. Always travel with boom retracted in the lowest possible position.



www.skyjack.com

This brochure is for illustrative purpose only and based on the latest information at the time of printing. Skyjack Inc. reserves the right to make changes at any time, without notice, to specifications, standard and optional equipment. Consult the Operating Maintenance and Parts Manuals for proper procedures. Work platforms have been tested to comply with ANSI and CSA standards as interpreted by Skyjack Inc.