

SJ86 T

TELESCOPIC BOOMS



STANDARD FEATURES

- EASYDRIVE™ Direction sensing drive and steer controls
- AXLDRIIVE™ Axle-based 4WD system
- Operator controlled locking rear differential and limited slip front differential
- Oscillating steer axle
- Drivable at full height
- 45% Gradeability
- Wet disc SAHR brakes (front and rear axle)
- Relay based control system with SKYCODED™ colour coded and numbered wiring
- Deutz D2011L04i diesel engine
- ECOSTART anti-engine idle
- Swing out engine tray
- Swing up cowlings for easy access
- Lockable power disconnect switch
- 7.5 kW generator (includes hydraulic oil cooler)
- Flashing light
- Proportional joystick controls and speed selector for platform toggle switch controls
- 227 / 341 kg Dual capacity
- 0.91 x 2.44 m Platform
- Bolt-in platform railing system
- Lanyard attachment points
- Tri-entry sliding mid rails
- Secondary Guarding Electrical (SGE)
- Overload sensing system
- Wiring for AC outlet on platform
- Tilt alarm (5.0° x 5.0°) with drive and lift cut-out
- Single point emergency lowering
- Hourmeter
- Operator horn
- White noise motion alarm
- 360° Continuous turret rotation
- Tie down / lifting lugs
- 18 x 625 Grip lug foam-filled non-marking tyres

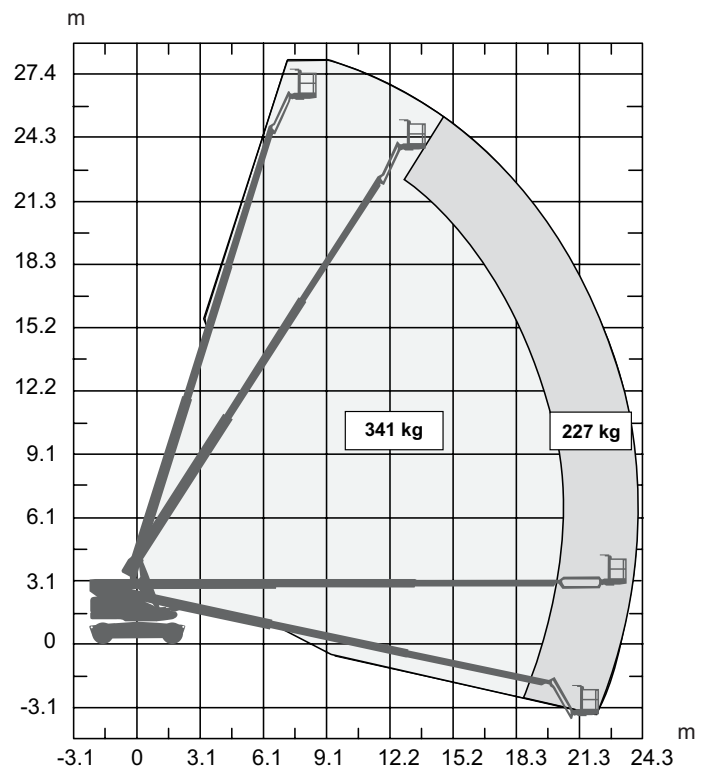
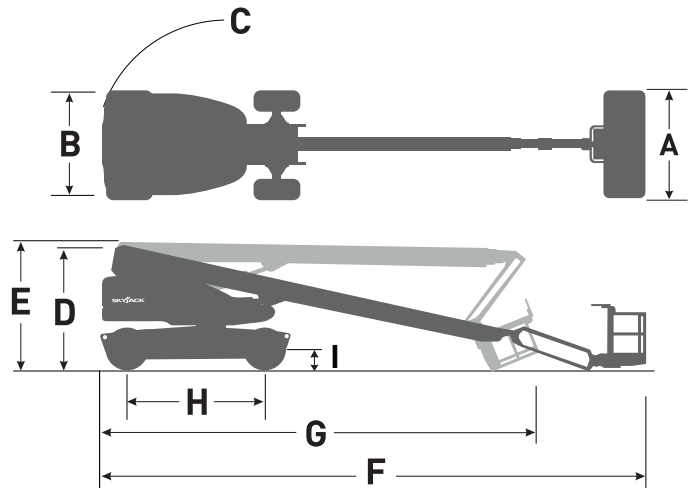
OPTIONS

- Glazier kit
- Pipe rack
- Tool caddy
- 0.91 x 1.83 m Platform
- Rear spring hinged entry gate
- Half height mesh platform (either size)
- Auxiliary top rail (0.91 x 2.44 m platform only)
- Diesel scrubber
- Bio oil
- Hostile environment package (includes cylinder bellows, boom wipers, covers for the fly boom cutouts, and control box cover)
- Control box cover
- Lifting lugs
- ELEVATE telematics

† Standard lead times may be increased when optional equipment is added, consult factory.
‡ Capacities and machine weights may differ when options are added.

SJ86 T TELESCOPIC BOOMS

| Dimensions | SJ86T |
|--------------------------------------|---------------------------------|
| Work Height | 28.21 m |
| Platform Height | 26.21 m |
| Horizontal Reach | 23.42 m |
| A Platform Size | 0.91 x 2.44 m |
| B Stowed Width | 2.49 m |
| C Tailswing | 1.42 m |
| D Stowed Height | 3.00 m |
| E Transportation Height | 3.13 m |
| F Stowed Length | 12.95 m |
| G Transportation Length | 10.59 m |
| H Wheelbase | 3.35 m |
| I Ground Clearance | 0.41 m |
| Specifications | SJ86T |
| Rotation | 360° Continuous |
| Platform Rotation | 170° |
| Jib Length | 1.68 m |
| Jib Range +/- | +65° / -60° |
| Weight | 17,550 kg |
| Gradeability | 45% |
| Turning Radius (Inside) | 3.51 m |
| Turning Radius (Outside) | 6.40 m |
| Axle Oscillation | 10.16 cm |
| Drive Speed (High speed) | 4.8 km/h |
| Capacity | 227 kg / 341 kg |
| Local Floor Load (With Rated Load) | 12.34 kg/sq cm |
| Overall Floor Load (With Rated Load) | 1,632 kg/sq m |
| Maximum Wind Rating | 12.5 m/s |
| Personnel Rating at Max Wind Rating | 2 / 3 |
| Tyre Type | Foam-Filled, NM |
| Tyre Size | 18-625 |
| Diesel Engine | Deutz D2011L04i - 65 HP (48 KW) |
| Fuel Tank Capacity | 170 L |
| Hydraulic Reservoir | 227 L |



SJ86 T WORKING ENVELOPE

Skyjack Australia Pty Ltd
 Unit 1, 35 Honeycomb Drive
 Eastern Creek
 NSW 2766
 Australia
 Phone +61 (0) 2 9854 0700
 Fax +61 (0) 2 9854 0777
 Email: jcranmer@skyjack.com

www.skyjack.com

