



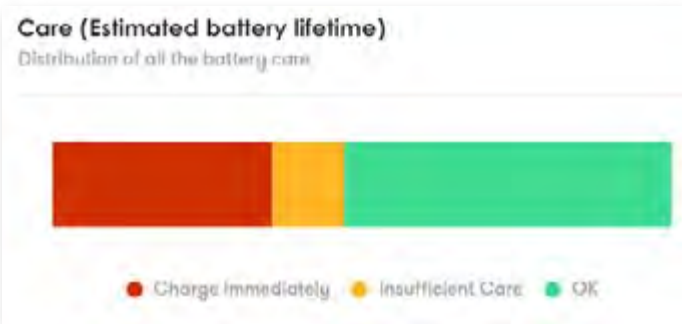
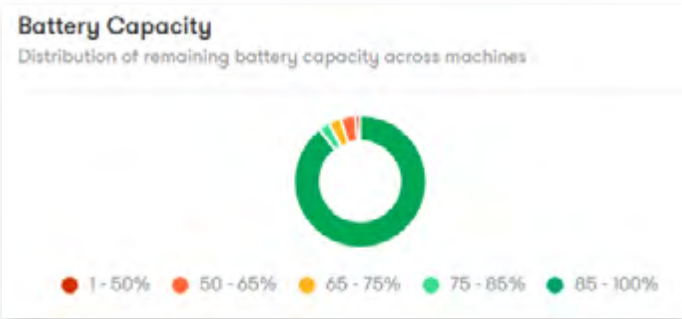
(Optional on Electric Scissor Lifts)

Elevate BMS (Battery Management System) targets the largest cost of ownership on electric scissors.

Elevate BMS provides the operator with charging advice, and the rental company the ability to manage the cost of battery replacement using accurate and immediate data.\*

Adding battery management to your Telematics package gives your personnel instant access to which batteries are ready to go, which need replacing, and which are being mistreated in the field.

Eliminating time spent physically testing battery packs, and trying to find out which machine has a full charge means eliminating cost from your operations and service budget.



\* Only available with ELEVATE telematics and not as a stand alone option.



Standard on all machines, ELEVATE Live provides serial-specific resources through a simple QR code including:

- Operator manuals
- Familiarization videos: brief visual overviews of the machine
- Serialised machine information, including parts manuals and specification sheets
- Emergency lowering procedures
- Pre-use checklist: visual guides for pre-use inspection
- Quickstart guide

Adding ELEVATE telematics provides live data to operators, giving access to the machines current state without need to download an app or create an account.

Combustion Machines: Engine faults, daily hours, and fuel used.

Electric Machines (with optional BMS): State of health, simple percentage of battery life, last charge date, and recommended charging action.



PACKAGE FEATURES	DIRECT	ENGAGE	ENGAGE +ACCESS
ELEVATE Manager		•	•
ELEVATE GO		•	•
ELEVATE Live	•	•	•
ELEVATE BMS	OPTIONAL	OPTIONAL	OPTIONAL
Ready to Operate indicator	•	•	•
True Utilisation analysis	•	•	•
API Access for direct data feed*	•	•	•
Mixed fleet capability	•	•	•
Remote lockout			•
Access Control with RFID/PIN code			•
Real-time SMS or Email alerts/notifications		•	•
Service/hours notifications		•	•
Automatically generate historical reports		•	•
Trackunit RAW 600 hardware	•	•	•
Dual ID keypad IP 69 Rated			•
Transmits data every 15 minutes	•		
Transmits data on activity, or every 2 minutes		•	•
Field Kit available	•	•	•
12-month package	•	•	•
36-month package	•	•	•
60-month package	•	•	•
Renewal packages available	•	•	•

\*ERP pairing/API Access may require additional programming resources and advanced knowledge of database management - not included with ELEVATE packages.

[skyjack.com/elevate](https://skyjack.com/elevate)

**Skyjack Australia**  
Unit 1, 35 Honeycomb Drive  
Eastern Creek  
New South Wales 2766  
Australia  
Tel: +61 (0) 2 9854 0700  
Fax: +61 (0) 2 9854 0777  
Email: jcranmer@skyjack.com



Actionable Insights.  
Measurable Benefits.

More than Telematics.

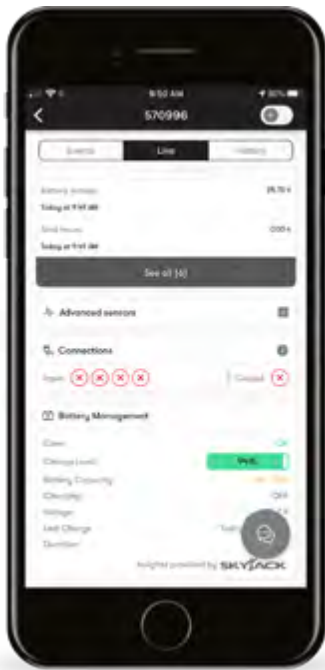




# DESIGNED FOR RENTAL

Skyjack became an industry leader by providing machine features that combine durability, quality and serviceability, making our products world renowned for reliability.

That approach is carried over to Skyjack's ELEVATE telematics – a solution for your entire fleet that follows Skyjack's simple and reliable philosophy.



## WHY TELEMATICS ?

Telematics systems provide three core benefits:

- Improved profitability
- Improved safety
- Fleet visibility & utilisation

## WHY ELEVATE?

Traditional telematics systems have been taken from on-road products which has created barriers to adoption for off road fleets. Barriers such as monitoring too many and not the right data points, excessive data costs, monthly license fees, and more.

Combining customer feedback and the expertise of our Skyjack engineering team, we have identified and optimised the most important data for our machines.

## REDUCE TRIPS TO SITE

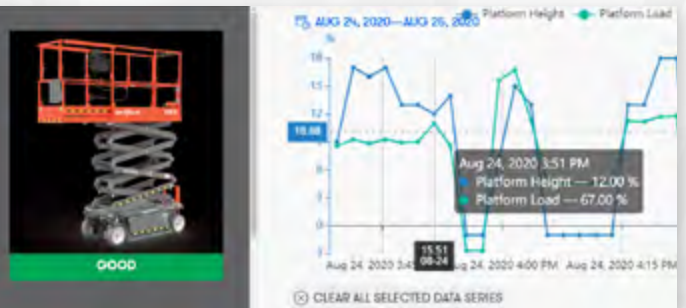
Skyjack's unique **READY TO OPERATE** available on DC Scissors and Vertical Masts. Shorten phone calls, reduce visits to site and reduce cost by remotely identifying operator error.

Indicates machine settings:



## INCREASE REVENUE

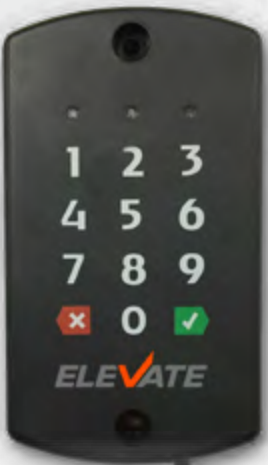
**TRUE UTILISATION** allows analysis of time elevated, driving, loaded and total run time provides true working time. Unlike other systems that simply look at engine run/pump time true utilisation tells you when your machine was at work, and when it was not.



## PROTECT YOUR ASSETS

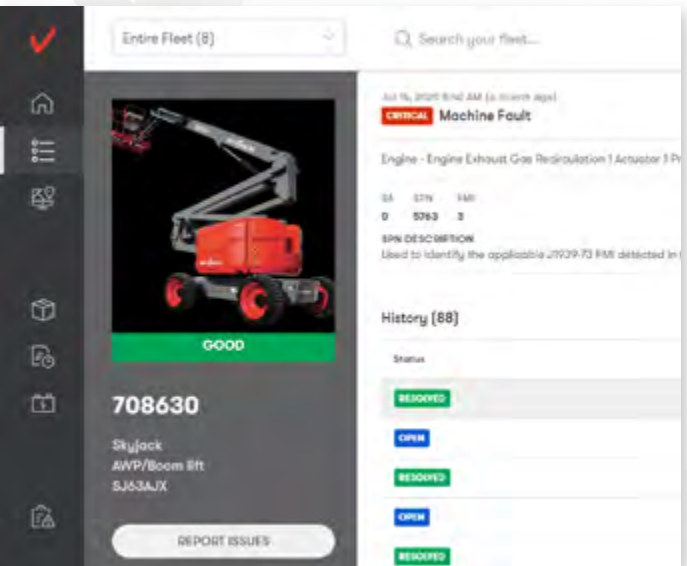
**ACCESS CONTROL** reduces unauthorised use and provides a safer work site by adding access control to your fleet.

The Dual ID II keypad uses PIN code, or an RFID card to control who operates your machines.



## STOP SERVICE CALLS BEFORE THEY START

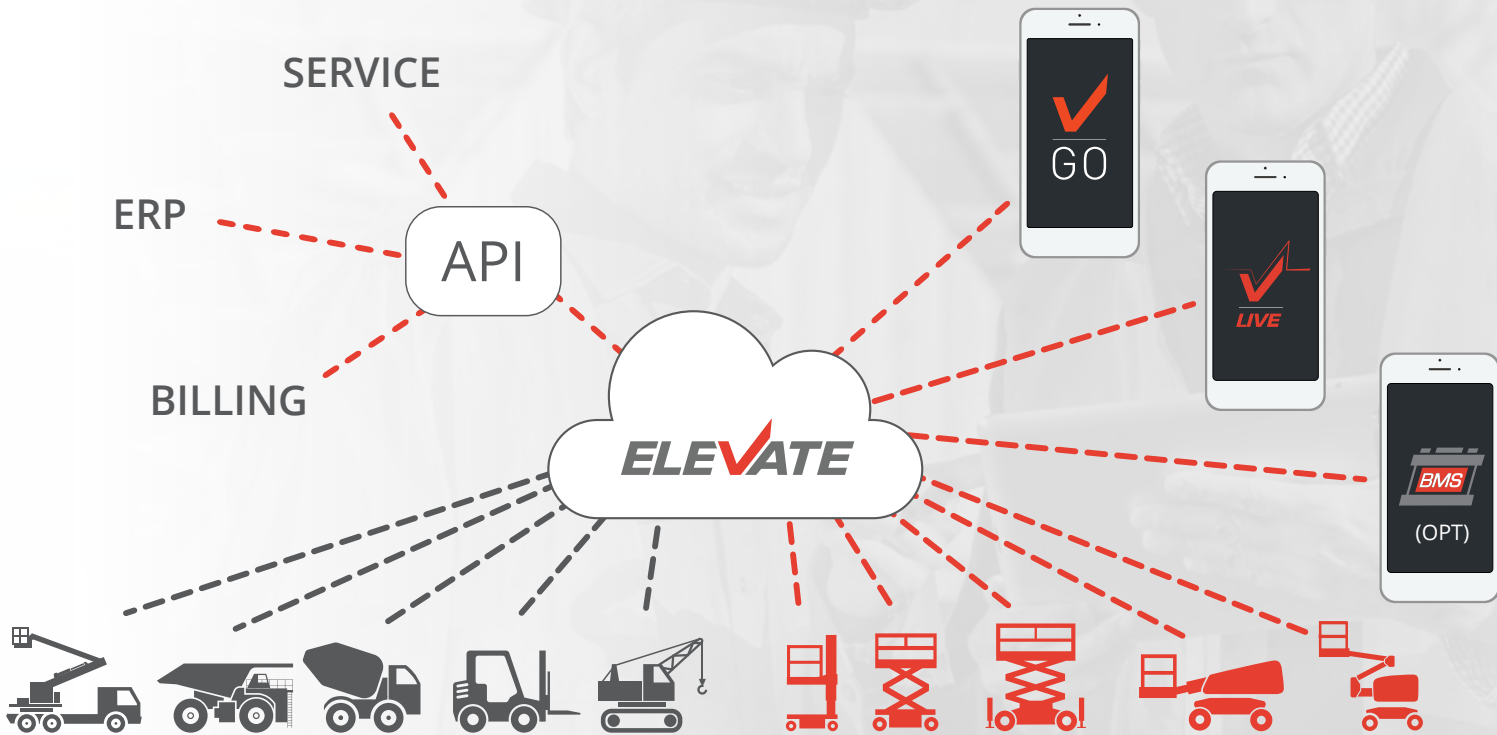
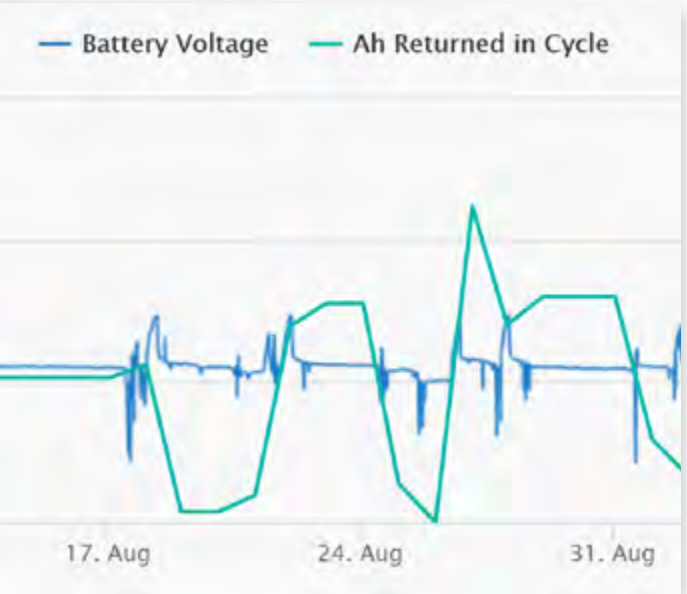
**CAN DATA AND ALERTS** allows you to understand the machine history without needing to be at the machine with specialised tools/software. Providing full fault code access to your service staff at their fingertips means making better decisions for the machine and the customer, better analysis, and reduced cost.



## SAVE TIME AND MONEY

**DATA-DRIVEN PDI** allows referencing of live data and machine history to decrease time and increase precision of PDI checks. Reducing machine replacement/repair on site means higher profitability per asset.

Send a machine that you know is ready, and improve customer satisfaction.

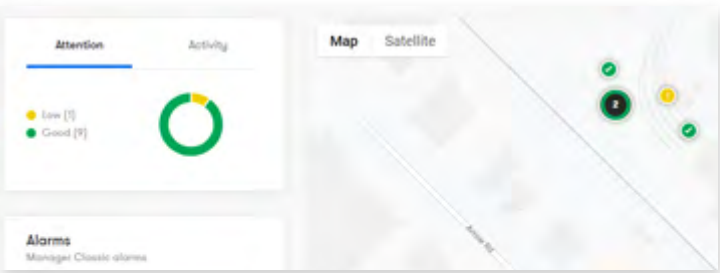


## EMPLOY TELEMATICS TO MIXED FLEETS

**ELEVATE** is powered by Trackunit, the accepted standard of hardware and platform for off-road and construction fleets. Log into a single portal to see your Skyjack machines at the same time as the rest of your fleet. Run reports and see insights for your entire fleet while benefitting from Skyjack-provided insights and alerts engineered for your Skyjack machines.

## RENTAL SOFTWARE INTEGRATION

All ELEVATE packages come with access to API connectivity allowing you to feed your rental software/ ERP system with live data direct from the machine.

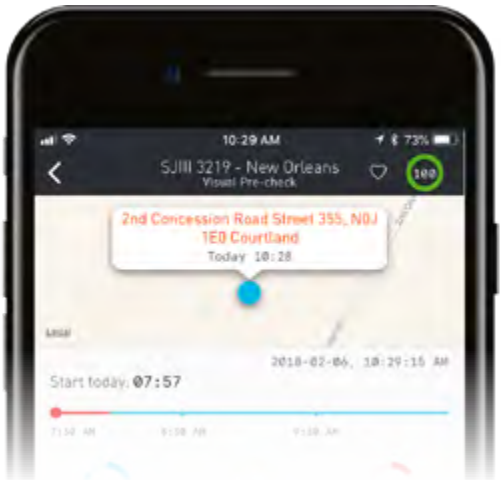


## TOOLS FOR EVERY ROLE IN RENTAL

**ELEVATE GO** offer mobile roles, such as service and logistics personnel, access to full features and data on the machines closest to them.

**ELEVATE Manager** provides fleet management and rental desk staff with the ability to run a fleet-wide analysis.

**ELEVATE Live** allows operators and rental yard staff instant access to a machine health snapshot.



Insights provided by **SKYJACK**

### DATA OWNERSHIP / CUSTOMER CHOICE

Digital products and data privacy/ownership practices continue to grow as a focus for our customers. Our digital products are sold to help generate the best possible ROI for our customers. Unlike some systems, Skyjack's **ELEVATE** allows our customers to choose their service, and who and how that service/data is accessed.