



# SJ30 ARJE

## ELECTRIC ARTICULATING BOOM

### KEY FEATURES

- EASYDRIVE™ Direction sensing drive and steer controls
- SKYRISER™ True vertical rise
- Direct AC electric drive
- Dual spring applied, electromagnetically released brakes
- Speed and angle sensing traction control
- Drivable at full height
- 35% Gradeability
- Relay based control system with SKYCODED™ colour coded and numbered wiring
- 48V 305 Ah Battery pack
- Swing out battery trays
- Swing out cowlings for easy access
- Proportional controls
- Function speed selector
- Rotating jib
- 0.76 x 1.17 m Platform
- Bolt-in platform railing system
- Lanyard attachment points
- Rear-entry sliding mid rail
- Secondary Guarding Electrical (SGE)
- Overload sensing system
- Wiring for AC outlet on platform
- Tilt alarm (3.0° x 2.0°) with drive and lift cut-out
- DC Powered emergency lowering
- Hourmeter
- Operator horn
- 355° Non-continuous turret rotation
- Tie down/lifting lugs
- 22 x 7 x 12 Solid rubber, non-marking tyres

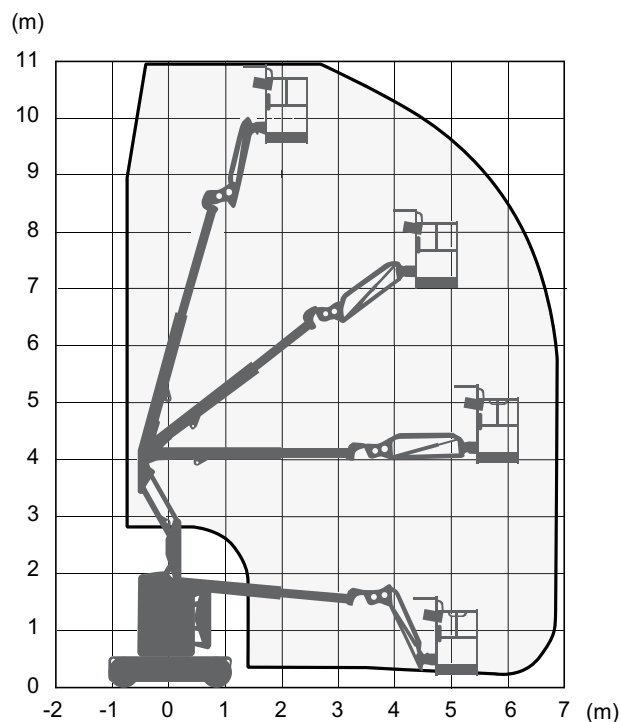
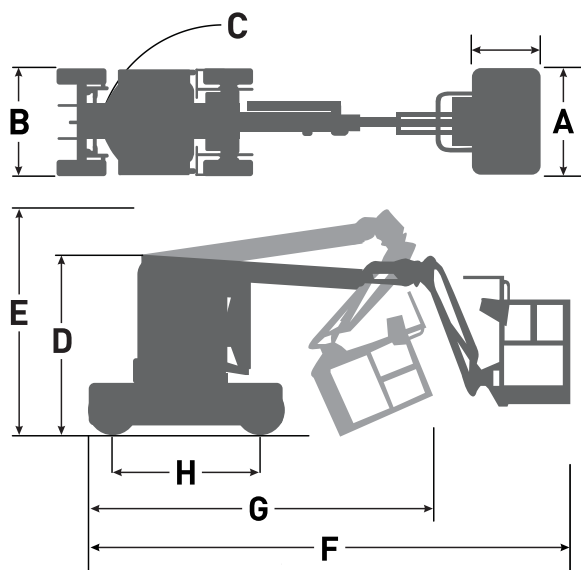
### OPTIONS

- Pipe rack
- Tool caddy
- Flashing light
- All motion audible alarm
- Rear spring hinged entry gate
- 360 Ah Batteries
- White noise alarm
- Bio oil
- Control box cover
- ELEVATE telematics

† Standard lead times may be increased when optional equipment is added, consult factory.  
‡ Capacities and machine weights may differ when options are added.

# SJ30 ARJE ELECTRIC ARTICULATING BOOM

Dimensions	SJ30 ARJE
Work Height	11.00 m
Platform Height	9.00 m
Horizontal Reach	6.26 m
Work Reach	6.91 m
Up and Over Height	3.99 m
<b>A</b> Platform Size	0.76 m x 1.17 m
<b>B</b> Stowed Width	1.19 m
<b>C</b> Tailswing	0
<b>D</b> Stowed Height	1.98 m
<b>E</b> Transport Height	2.50 m
<b>F</b> Stowed Length	5.51 m
<b>G</b> Transport Length	3.80 m
<b>H</b> Wheelbase	1.65 m
Ground Clearance	10.16 cm
Specifications	SJ30 ARJE
Turret Rotation	355° NC
Platform Rotation	180°
Jib Length	1.25 m
Jib Range of Motion - Horizontal	180°
Jib Range of Motion - Vertical	142° (+77°/-65°)
Weight	5,750 kg
Gradeability - Counterweight Facing Up	35%
Gradeability - Counterweight Facing Down	25%
Turning Radius (Inside)	1.52 m
Turning Radius (Outside)	3.23 m
Drive Speed (Stowed)	4.8 km/h
Drive Speed (Elevated/Extended)	0.4 km/h
Capacity	227 kg
Local Floor Load (With Rated Load)	15.35 kg/sq cm
Overall Floor Load (With Rated Load)	2,264 kg/sq m
Maximum # of Persons (Indoors/Outdoors)	2/1
Wind Rating	12.5 m/s
Tyre Type	Solid, N/M
Tyre Size	22 x 7 x 12



**SJ30 ARJE WORKING ENVELOPE**

[www.skyjack.com](http://www.skyjack.com)

Skyjack UK  
Unit 1, Maes-y-Clawdd  
Maesbury Road Industrial Estate  
Oswestry, Shropshire, SY10 8NN  
Tel: +44 1691 676235  
Fax: +44 1691 676239  
Email: [info@skyjackeurope.co.uk](mailto:info@skyjackeurope.co.uk)

Skyjack SAS (France)  
74 Rue Sibert  
F-42400 Saint Chamond  
France  
Tel: +33 (0) 4 78 73 53 32  
Fax: +33 (0) 4 78 56 52 42

Skyjack Hebebühnen GmbH  
(Germany)  
Därmanbusch 2a  
D-58456 Witten  
Tel: +49 (0) 2302 20 26 909  
Fax: +49 (0) 2302 20 25 671

Skyjack AB (Sweden)  
Agnesbergsvägen 28  
424 38 Agnesberg  
Sweden  
Tel: +46 (0) 31 21 22 45  
Fax: +46 (0) 31 787 65 10

**SKYJACK**  
simply reliable