

SJ45/60 AJHE+

HYBRID ELECTRIC ARTICULATING BOOMS



STANDARD FEATURES

- 23A automatic battery charger with battery condition indicator
- 415 Ah AGM batteries
- Integrated electric traction motor brake
- Low battery warning indicator light
- Kubota D902 Tier 4 Final diesel generator engine
- EASYDRIVE™ Direction sensing drive and steer controls
- SKYRISER™ True vertical rise
- AXLDRIVE™ Axle-based 4WD system
- SKYCODED™ control system
- E-boom ECOSTART (Stop-Start system)
- Operator controlled locking rear differential and limited slip front differential
- Oscillating steer axle
- Drivable at full height
- 45% Gradeability
- Non-marking tires
- Swing up cowlings for easy access
- Proportional controls
- Up to 1,000 lbs (454 kg) capacities
- Bolt-in platform railings
- Lanyard attachment points
- Dual-entry sliding mid rails (SJ45 AJE+)
- Tri-entry sliding mid rails (SJ60 AJE+)
- Secondary Guarding Electrical (SGE)
- Overload sensing system
- 110V AC Outlet on platform with GFI
- Tilt alarm (5.0° x 5.0°) with drive and lift cut-out
- Single point emergency lowering
- 355° Non-continuous turret rotation
- Tie down/lifting lugs
- Hourmeter
- Operator horn
- Lockable power disconnect switch
- Telematics ready
- 2 Year Gold Leaf Warranty (5 year structural warranty)



- 16% weight reduction
- 62% less fuel*



- Reduced emissions



- 3% reduction in engine noise (excl. alarms)
- White noise alarm – *optional*



- 85% recyclable (by weight)



- E-boom ECOSTART (Stop-Start system)
- HVO compatible
- Bio-degradeable hydraulic oil – *optional*

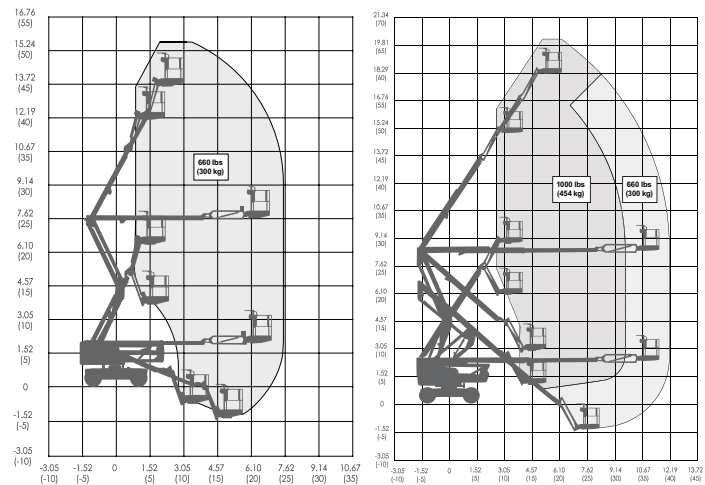
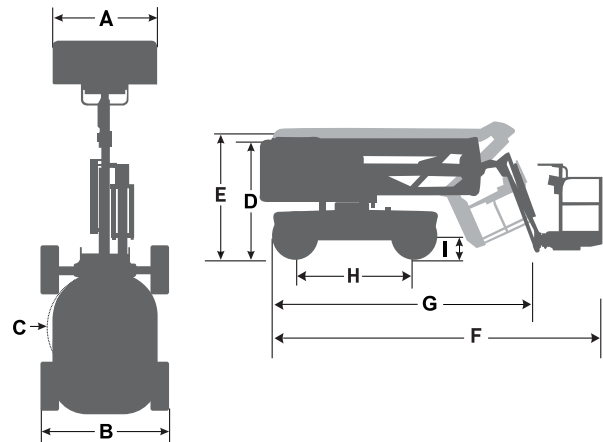


- Telematics – Remote diagnostics reduces site visits (operational carbon foot print)

*Compared to previous generation diesel models

SJ45/60 AJHE+ HYBRID ELECTRIC ARTICULATING BOOMS

Dimensions	SJ45 AJHE+	SJ60 AJHE+
Work Height	51' (15.54 m)	66' (20.11 m)
Platform Height	45' (13.72 m)	60' (18.29 m)
Horizontal Reach	22' 9" (6.93 m)	37' 11" (11.56 m)
Up and Over Height	24' 5.25" (7.45 m)	27' 2" (8.31 m)
A Platform Size	30" x 72" (0.76 x 1.83 m)	36" x 96" (0.91 x 2.44 m)
B Stowed Width	7' 6" (2.29 m)	8' (2.44 m)
C Tailswing	2' (0.61 m)	2' (0.61 m)
D Stowed Height	6' 9" (2.06 m)	8' 4" (2.54 m)
E Transportation Height	7' 1" (2.16 m)	9' 2" (2.79 m)
F Stowed Length	19' 8" (6.00 m)	28' 2" (8.59 m)
G Transportation Length	15' 7" (4.75 m)	21' 8" (6.60 m)
H Wheelbase	6' 8" (2.03 m)	8' (2.44 m)
I Ground Clearance	15.25" (0.39 m)	13" (0.33 m)
Specifications	SJ45 AJHE+	SJ60 AJHE+
Rotation	355° NC	
Platform Rotation	170°	
Jib Length	4' 8" (1.40 m)	5' (1.52 m)
Jib Range +/-	+70° / -75°	+65° / -60°
Weight	12,533 lbs (5,685 kg)	20,177 lbs (9,125 kg)
Gradeability	45%	
Turning Radius (Inside)	4' 11" (1.50 m)	7' 3" (2.21 m)
Turning Radius (Outside)	14' 3" (4.34 m)	17' 5" (5.31 m)
Axle Oscillation	5" (12.70 cm)	4" (10.16 cm)
Drive Speed (High speed)	3.0 mph (4.8 km/h)	
Capacity	660 lbs (300 kg)	660 / 1,000 lbs (300 / 454 kg)
Maximum Wind Rating	28 mph (12.5 m/s)	
Personnel Rating at Max Wind Rating	2	2 / 3
Tire Size	10 x 31	14 x 610
Tire Type	N/M Solid	N/M Foam-Filled
Batteries	415 Ah AGM	
Charge Time	0–100% <15 hrs / Bulk charge 35–85% <2.5 hrs	
Hydraulic Reservoir	24 gal. (91 L)	30.4 gal. (115 L)
Generator Engine	Kubota D902	



SJ45 AJHE+ WORKING ENVELOPE

SJ60 AJHE+ WORKING ENVELOPE

ACCESSORIES

- Pipe rack
- Glazier kit
- Tool caddy

OPTIONS

- Flashing light
- 36 x 72" (0.91 x 1.83 m) Platform (SJ60 AJHE+)
- Side spring hinged entry gate (SJ45 AJHE+)
- Rear spring hinged entry gate (SJ60 AJHE+)
- Bio oil
- Non destructive testing
- White noise alarm
- ELEVATE telematics

Skyjack Head Office

55 Campbell Rd. Guelph, ON Canada N1H 1B9
 Sales Inquiries: 1-877-755-4387 (1-877-SJLIFTS)
 Main Switchboard: 1-800-265-2738
 Phone: 519-837-0888
 Fax: 519-837-8104
 Email: skyjack@skyjack.com

www.skyjack.com

† Standard lead times may be increased when optional equipment is added, consult factory.
 ‡ Capacities and machine weights may differ when accessories and options are added.