

SKYJACK INNOVATION

AXLDRIVE

SUPERIOR TRACTION

A true mechanical four-wheel drive system with an oscillating steer axle provides unmatched traction and up to 45% gradeability. This industry-leading terrain capability means one can use Skyjack boom lifts in the most challenging of conditions.



EASYDRIVE

DRIVE & STEER DIRECTION SENSING

A simple feature only utilised by Skyjack - the Boom Lift drive function operates in accordance with the general orientation of the turret's counterweight over the chassis (i.e. joystick forward = counterweight facing forward). This provides intuitive operation by allowing the unit to move in the general direction of the joystick's movement.



SKYJACK OPTIONS

Skyjack's approved options and ACCESSORYZERS™ are designed to add functionality to your machine and convenience for the operator.

- High Capacity FLA Battery 480AH
- 0.91 m x 1.83 m platform
- White noise alarm

SGE

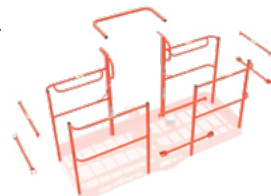
ELECTRICAL SECONDARY GUARDING SYSTEM

Skyjack's SGE system is intended to prevent sustained involuntary operation.



SIMPLE TO REPLACE BOLT-IN RAILINGS

Bolt-in platform railings not only provide a durable structure, but also a service part that's easily replaceable. Optional gate entrances and different sized platforms are also available.



SCAN TO VIEW SPECIFICATIONS TABLE (PDF)



Skyjack Asia-Pacific

No.66 Bao Shui Road, Airport Economic Area,
Tianjin Pilot Free Trade Zone, Tianjin, China, 300308
Tel: +86 22 2308 9888
Email: asia.sales@skyjack.com

www.skyjack.com

This brochure is for illustrative purpose only and based on the latest information at the time of printing. Skyjack Inc. reserves the right to make changes at any time, without notice, to specifications, standard and optional equipment. Consult the Operating Maintenance and Parts Manuals for proper procedures. Work platforms have been tested to comply with ANSI and CSA standards as interpreted by Skyjack, Inc.

SEA/ENG 12/25



ELECTRIC TELESCOPIC BOOM



SKYJACK
simply reliable

SIMPLY ELECTRIC, SIMPLY MORE

Skyjack's new battery powered rough terrain telescopic boom features high platform capacities and provide a clean, quiet, sustainable rental solution with zero emissions, lower operating costs and increased utilisation.

Available with 28m working height and suitable for indoor and outdoor use, the SJ28 TE+ model includes many of the design features that have made Skyjack a preferred supplier in other parts of the world. High performance AC electric traction and pump generator/motors deliver high torque power and 360-degree consistent multi-function capability.

The new range remains simple, reliable and provides an environmentally friendly and sustainable choice for rental.



DESIGNED FOR RENTAL

Skyjack became an industry leader by providing machine features that combine durability, quality, and serviceability, making our products world renowned for product reliability.

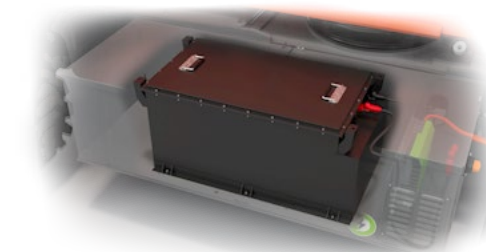
Our team understands the importance of maximum uptime, so our equipment is designed to provide just that. All major service points are easily accessible, enabling straightforward troubleshooting and repairs.



Rental companies and major contractors face increasing demands for sustainability information. Skyjack has introduced its ECO mark to support our customers by providing products that deliver benefits in environmental performance and long-term sustainability. Skyjack's E-Drive booms ECO benefits include:

	<ul style="list-style-type: none"> 56% operational carbon saving
	<ul style="list-style-type: none"> Zero emissions
	<ul style="list-style-type: none"> <70 dB inherently quiet machine operation (excl. alarms)
	<ul style="list-style-type: none"> 85% recyclable (by weight)
	<ul style="list-style-type: none"> Up to 50% less hydraulic connections - reduces leak potential

*Compared to SJ86 T diesel boom



ELECTRIC DRIVE

Skyjack's SJ28 TE+ has been designed to meet true job site performance expectations, whether it be navigating various rough terrain conditions or lifting the platform.

All electric, four-wheel, axle-based drive provides efficiency and rough terrain performance. The drive system uses a high-performance AC induction traction motor and AC pump motor system to optimise current torque, power and speed.

An oscillating steer axle works in conjunction with the drive system to keep all four tyres in contact with the ground, even in the roughest of terrain. Improved traction provides a noticeably smoother ride and consistent multi-function capability delivers a superior operator experience.

INCREASED CAPACITIES

Platform capacities up to 454 kg and 3 persons in the platform. Dual platform capacities load charts with smooth transition between reach zones.

- Boom will automatically retract based on load and position when navigating between both reach zones - no stopping and operator intervention is involved
- Increases productivity
- Integrated with load sensing
- Lights on control box indicate zone, based on weight and position



- Sleek design, key components fully enclosed in the chassis and chassis cabinets, providing both protection and accessibility
- Hostile environment kit as standard: Boom wipers, cylinder bellows and control box cover
- Operator controlled locking rear differential and limited slip front differential
- Drivable at full height
- 23A automatic battery charger with battery condition indicator
- 360° continuous turret rotation
- Auto leveling platform
- Standard foam-filled tires
- Secondary Guarding Electrical (SGE) standard
- Telematics ready

EASE OF MAINTENANCE

Designed with ease of maintenance and service in mind, key components are easily accessible and placed to allow optimum hose routing and maintenance accessibility in order to minimize downtime.



SKYCODED™

COLOUR CODED & NUMBERED WIRING

At the heart of every Skyjack machine is our proven an easy-to-understand control system, and the SJ28 TE+ is no different.

Onboard diagnostics with a large display allows operators or service technicians to see real-time, easy-to understand faults in plain, simple language readouts. No plug-in calibration is necessary for day-to-day troubleshooting, including load sensing information.

LOWER OPERATING COSTS

Skyjack's electric booms provide additional low lifetime ownership and running costs:

- Efficient maintenance-free Li-ion batteries 519AH
- No engine maintenance requirements - no liquid fuel systems, filters or emission control costs
- Much easier for customers to use
- Straightforward to maintain and service means less mechanic time