

# SJ28 TE+ ELECTRIC TELESCOPIC BOOM



## STANDARD FEATURES

- EASYDRIVE™ Direction Sensing Drive and Steer Controls
- AXLDRIIVE™ Axle-based 4WD System
- SKYCODED™ color coded and numbered wiring
- 360° Continuous Turret Rotation
- 300 kg / 454 kg Dual Capacity
- Auto Retraction - one-touch Boom down
- CAN-based Control System
- Hostile Environment Package  
(including cylinder bellows, boom wipers, covers for fly boom cutouts, and control box cover)
- High efficiency AC Brushless Traction Motor with integrated braking system
- Operator-controlled locking rear differential and limited slip front differential
- Proportional joystick controls and speed selector for platform toggle switch controls
- Oscillating Steer Axle
- Drivable at Full Height
- 45% Gradeability
- Tilt Alarm (5.0° x 5.0°) with drive and lift cut-out
- Emergency Lowering System
- 18 x 625 Grip lug foam-filled tires
- Tie down
- Swing out cowling for easy access
- Overload Sensing System
- All Motion Audible Alarm
- Lockable Power Disconnect Switch
- 80 V DC System Voltage
- High Capacity Li-ion Battery (519AH)
- Charger with multiple charging modes
- Flashing Light
- 7" LED Display in Base Control
- 0.91 m x 2.44 m Platform
- Bolt-in platform railing system
- Tri-entry rails - one spring-hinged gate with 2 sliding bars
- Secondary Guarding Electrical (SGE)
- Hourmeter
- Operator Horn
- Standard Beeper Alarm System

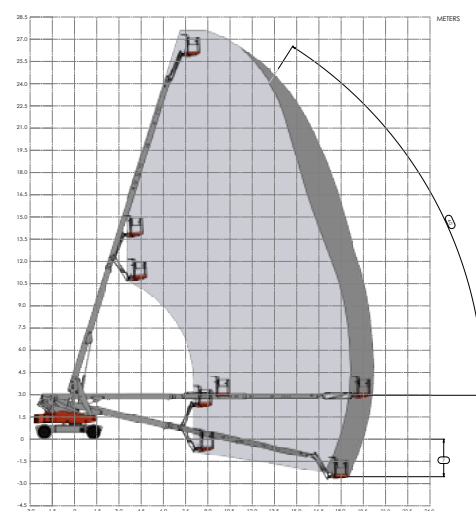
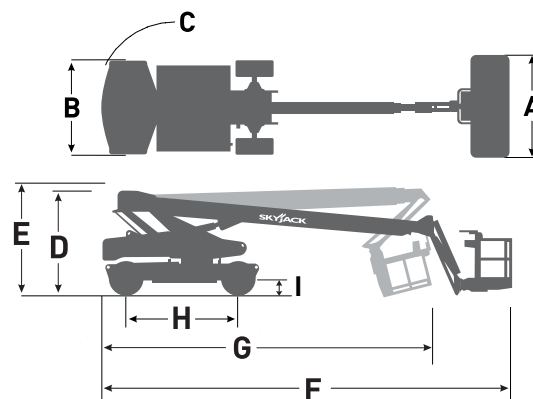
## OPTIONS

- High Capacity FLA Battery 480AH
- 0.91 m x 1.83 m Platform
- White Noise Alarm System

† Standard lead times may be increased when optional equipment is added, consult factory.  
‡ Capacities and machine weights may differ when options are added.

# SJ28 TE+ ELECTRIC TELESCOPIC BOOM

Dimensions	SJ28 TE+
Work Height	28.22 m
Platform Height	26.22 m
Horizontal Reach	20.80 m
<b>A</b> Platform Size	0.91 m x 2.44 m
<b>B</b> Stowed Width	2.51 m
<b>C</b> Tailswing	1.53 m
<b>D</b> Stowed Height	3.15 m
<b>E</b> Transportation Height	3.15 m
<b>F</b> Stowed Length	12.49 m
<b>G</b> Transportation Length	10.85 m
<b>H</b> Wheelbase	3.355 m
<b>I</b> Ground Clearance	0.40 m
Specifications	SJ28 TE+
Rotation	360° Continuous
Platform Rotation	175°
Jib Length	1.68 m
Jib Range +/-	70° / 60°
Weight	16,275 kg
Gradeability	45°
Turning Radius (Inside)	3.36 m
Turning Radius (Outside)	6.83 m
Axle Oscillation	6 cm
Drive Speed (High Speed)	4.8 km/h
Capacity	300 kg / 454 kg
Maximum Wind Rating	28 mph (12.5 m/s)
Personnel Rating at Max Wind Rating	2 / 3
Tire Type	Foam-Filled
Tire Size	18-625
System Voltage	80 V DC
Battery Capacity (Li-ion)	519AH
Bulk Charging Time at 60A (Li-ion Battery) 0%-80%	≤5 Hours
Bulk Charging Time at 80A (Li-ion Battery) 0%-80%	≤4 Hours
Hydraulic Oil Tank Capacity	150 L



**SJ28 TE+ WORKING ENVELOPE**



- 56% operational carbon saving



- Zero emissions



- <70 dB inherently quiet machine operation (excl. alarms)



- 85% recyclable (by weight)



- Up to 50% less hydraulic connections - reduces leak potential

\*Compared to SJ86 T diesel boom

## Skyjack Asia-Pacific

No.66 Bao Shui Road, Airport Economic Area,  
Tianjin Pilot Free Trade Zone, Tianjin, China,  
300308  
Tel: +86 22 2308 9888

## Skyjack Head Office

55 Campbell Road, Guelph, ON Canada N1H 1B9  
Sales Inquiries: 1-877-755-4387 (1-877-SJLIFTS)  
Main Switchboard: 1-800-265-273

[www.skyjack.com](http://www.skyjack.com)



**SKYJACK**  
simply reliable